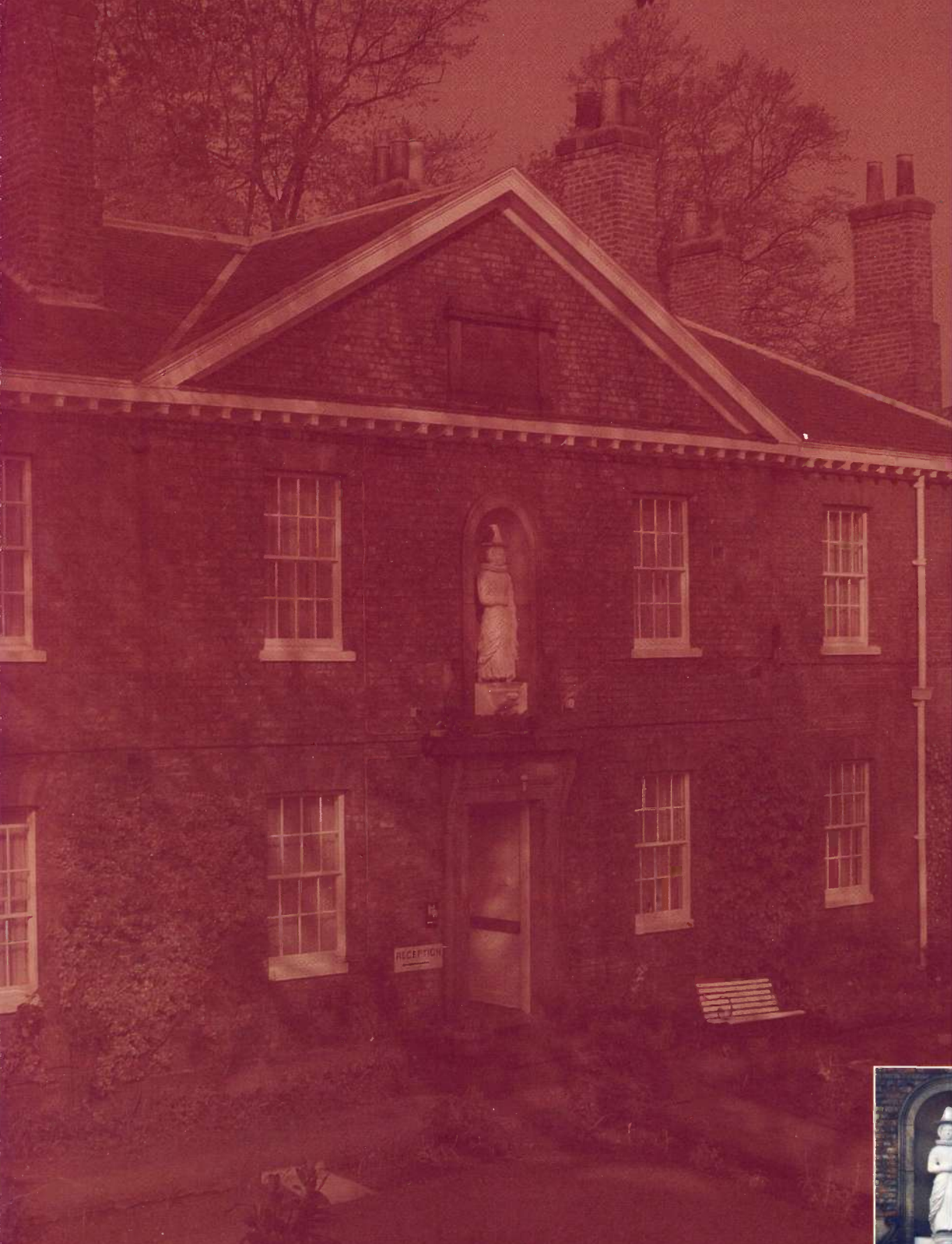


Right in the heart of York...



Lady



Lady Anne Middleton's

HOTEL • YORK



THE IDEAL VENUE FOR MEETINGS AND EVENTS, RIGHT IN THE HEART OF YORK!

Thank you for your interest in Lady Anne Middleton's Hotel. We are delighted you are considering holding your proposed event with us.

Nestled in a secluded English courtyard garden, the hotel will delight you with its tranquillity, yet close proximity to all York has to offer visitors for both business and pleasure. Getting here is easy - just half a mile from the railway station or take advantage of our free on-site parking, then relax (or keep fit!) in Emperor's Gym – with counter-current fitness pool, saunas, CV equipment and fitness classes.

Our unique and centrally located "Meetings Place" provides meeting facilities in four rooms, with capacities of up to 40, enhanced by a central break-out area for refreshments at times to suit the organiser. Larger rooms within the hotel can also be provided for conference and event bookings.

Whatever your needs, we will endeavour to meet them - whether for equipment hire for your meeting, detailed menu requirements or one-off special requests. Flexibility is the key word – please just ask; our experienced team will be pleased to discuss your specific requirements with you.

We have wealth of experience hosting a wide range of events, including:

- ❖ Small interviews or week long employee selection events
- ❖ Training seminars, management meetings, corporate functions
- ❖ Product presentations
- ❖ Society lunches
- ❖ Gala Dinners
- ❖ Family Celebrations
- ❖ Christmas Dinner & Disco
- ❖ Reunions

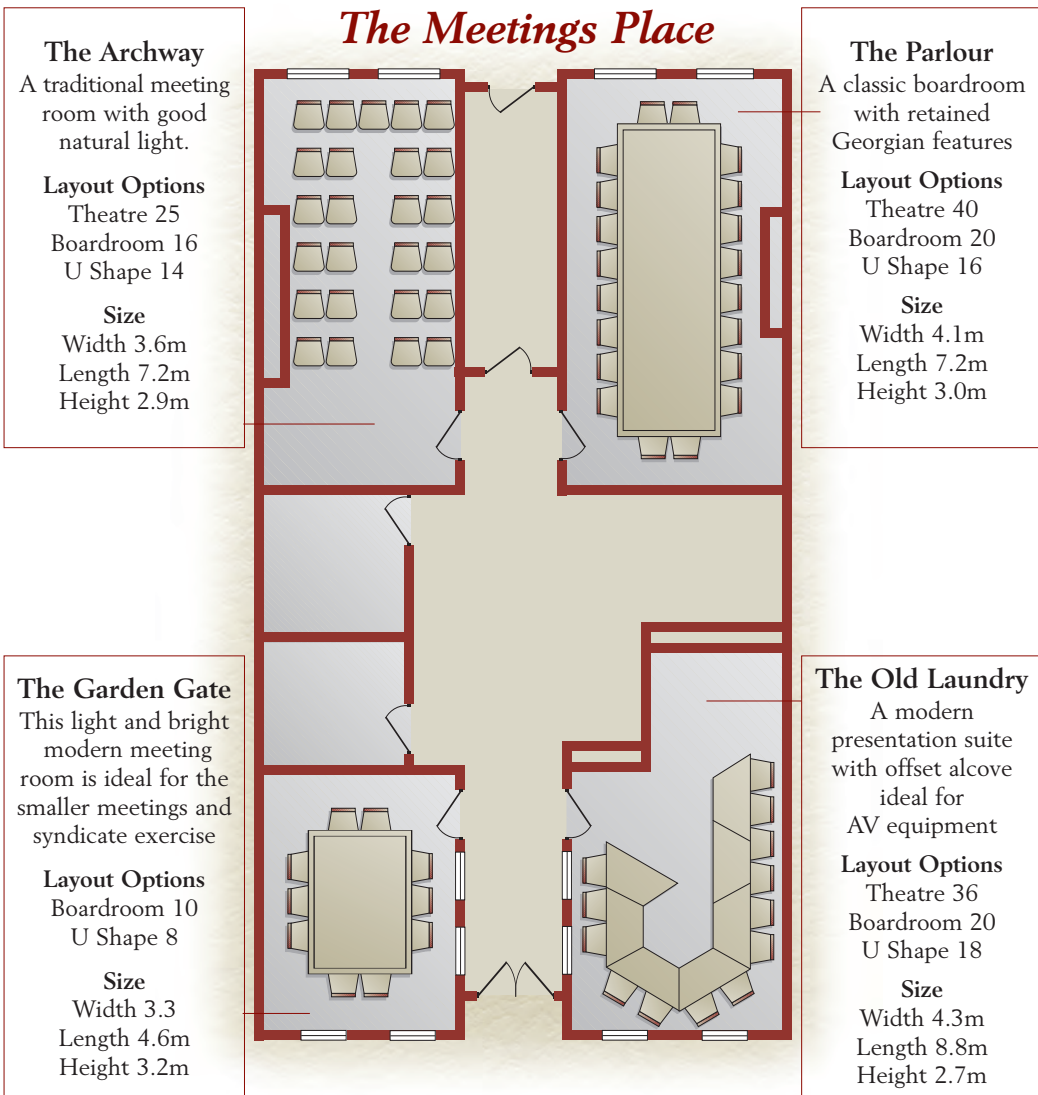
The list could go on....

The enclosed brochure provides lots of information and we look forward to working with you. Please contact us: Tel: 01904 611570, Fax: 01904 613043, email: events@ladyannes.co.uk

With our best regards

The Events Team @ Lady Anne Middleton's Hotel

The Meetings Place

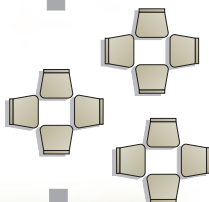


The Sawmill

Layout Options
Theatre 80
Boardroom 30
U Shape 30

Size
Width 5.6m
Length 19.6m
Height 2.4m

Lounge & Bar Area



The Conservatory

Layout Options
Theatre 50
Boardroom 20
U Shape 14

Size
Width 7.0m
Length 15.7m
Height 2.4m

The Organ Factory

Layout Options
Theatre 60
Boardroom 20
U Shape 10
Classroom 24

Size
Width 6.0m
Length 12.6m
Height 2.8m

Break-Out Area

For unlimited coffee, tea and spring water

THE MEETINGS PLACE



Archway



Parlour



Garden Gate



Old Laundry



“The Meetings Place” at Lady Anne Middleton’s Hotel

The Meetings Place	Organ Factory	Conser-vatory	Sawmill	Archway	Parlour	Old Laundry	Garden Gate
Room Specification							
Location	1st floor	ground	ground	ground	ground	ground	ground
Length – metres	12.6	15.7	19.6	7.2	7.2	8.8	4.6
Length – feet	41’6”	52’0”	64’5”	24’0”	24’0”	29’0”	15’6”
Width – metres	6.0	7.0	5.6	3.6	4.1	4.3	3.3
Width – feet	20’0”	22’9”	18’6”	12’0”	14’0”	14’0”	10’0”
Area – sqm	77	110	111	26	30	37	15
Area – sq feet	830	1154	1193	288	336	406	155
Height – metres	2.8	2.4	2.4	2.9	3.0	2.7	3.2
Height – feet	9’4”	8’0”	8’1”	9’6”	9’9”	9’0”	10’6”
Door height – metres	2.0	2.0	2.0	2.6	2.0	2.0	2.0
Door height – feet	6’6”	6’6”	6’6”	7’6”	6’6”	6’6”	6’6”
Door width – metres	0.8	1.6	1.6	1.9	1.0	0.8	0.8
Door width – feet	3’0”	6’0”	6’0”	3’3”	3’3”	3’0”	3’0”
Wheelchair Access	no	yes	yes	yes	yes	yes	yes
Blackout	yes	no	yes	yes	yes	yes	yes
Natural Daylight	yes	yes	yes	yes	yes	yes	yes
Windows	3	12	2	2	2	4	4
13 Amp Sockets	8	20	13	18	18	18	6
Telephone Point	1	1	1	1	1	1	1
TV Aerial Socket	yes	yes	yes	no	yes	yes	yes
Wireless Internet Access	no	no	no	yes	yes	yes	yes

Conferecing Lunch Selector

Working Lunch buffet (Presented in room, no waited-on service)

Leaf salad
with egg and Dijon mayonnaise

Poached chicken mayonnaise

Lambs lettuce
with prawns and a Marie Rose sauce

Mushroom and pineapple pizza slices (V)

Roast vegetable and satay
wraps (V)

Homemade chicken goujons
with seasonal light crumb and a dip

Sandwich selection comprising:
*various savoury, meat and
vegetarian fillings on white
and whole meal bread*

A combination of spring rolls,
samosas and onion bhajis
with lime mayonnaise dip

Cheese & onion tart
with Parmesan cheese

Sliced fresh fruit display
Fresh cream cakes, fresh buttered scones with cream and preserves and assorted fancies

Cold Restaurant buffet (Presented in restaurant, buffet service)

Roasted vegetable tart (V)

Breaded chicken pieces

Tomato vinaigrette (V)

Waldorf salad

Green leaf salad (V)

Mushroom and pineapple pizza (V)

Honey glazed ham
with apricot chutney

Chive potato salad (V)

Smoked Mackerel fillets

A combination of spring rolls,
samosas and onion bhajis
with lime mayonnaise dip

Cucumber and onion salad
with tomato vinaigrette (V)

Freshly brewed tea or coffee
Chef's selection of desserts & fruit salad

Hot Restaurant Buffet (Served in the restaurant)

Vegetable lasagne
completed with Verde pesto (V)

Braised gammon
*cooked with a rich cheese and onion
Sauce*

Cucumber and onion salad
With tomato vinaigrette (V)

Mushroom and red onion Tikka Massala
(V)

Minted new potatoes & herb diced
potatoes

Green leaf salad (V)

Savoury long grain rice

Marinated chicken
cooked with a red wine and herb sauce

Selection of hot vegetables

Freshly brewed tea or coffee

*** (N R Menus listed are samples) ***



LADY ANNE MIDDLETON'S HOTEL TRAVEL TERMS OF TRADE

(Group & Conference/Banqueting Bookings)

1. All accounts are payable on presentation.
2. All accounts on which a query is not raised within seven days of presentation shall be deemed approved as presented.
3. All accounts unpaid within 30 days of date of the invoice will attract interest at the rate of 8% over base on the outstanding total. This is in accordance with the Late payment of Commercial Debts (Interest) Act 1998.
4. Cancellation Policy:
 - 4.1 For cancellations made more than 12 months prior to the arrival date- no charge will be levied.
 - 4.2 For accommodation only bookings-

If the booking is cancelled less than 12 months but more than 3 months in advance all deposit monies will be withheld.

For cancellations made less than 3 months but more than 1 month prior to arrival there will be a charge of 25% of the total booking value.
 - 4.3 For Conference/Banqueting bookings-

If cancelled less than 12 months but more than 1 month prior to arrival there will be a charge of 25% of the total booking value.
 - 4.4 For both Group and Conference/Banqueting bookings-

If cancelled less than 1 month but more than 2 days in advance the charge will be 75% of the total booking value. Any cancellations made within 48 hours prior to arrival -100% charges will stand.
 - 4.5 For Conference / Banqueting bookings only-

In the case where inclusive delegate rates or similar tariffs have been quoted, and the number significantly reduces, an additional room charge may be made to reflect the original size room allocated, unless a smaller room can be substituted. Guaranteed minimum numbers of covers have to be confirmed at the latest 14 clear working days prior to the event. These numbers then automatically become the minimum chargeable or 90% of the original number given, whichever is the larger.

Equipment Hire:
With sufficient notice we can provide most equipment required for conferences/functions. We do not accept responsibility in the event of any theft, loss or damage to any equipment not provided by the hotel.
5. If cancelled through a third party or agent and cancellation fee is due as per clause 4; no commission will be due to the party or agent.
6. We shall always use our very best endeavours to re-let any cancelled accommodation and if we are successful wholly or in part, the cancellation charges will be correspondingly either reduced or altogether waived.
7. Signature on all Booking Contracts (Groups and Conference/Banqueting) binds the client to Lady Anne Middleton's Hotel's Terms of Trade.
8. These terms of trade are non- negotiable, and are to be construed in accordance with English law.

SatNav Code:YO1 6DU



For further enquiries and reservations, please contact us:

by mail:
Lady Anne Middleton's Hotel,
Skeldergate, York, YO1 6DS

by telephone:
01904 611570

by facsimile:
01904 613043

via email:
bookings@ladyannes.co.uk

or visit our website:
www.ladyannes.co.uk

York is easily accessible from the A64, A1, M1 & M62.

Although there are many routes into York, we recommend the following:

1. On reaching the York Outer Ring road - the A64 and the A1237, take the shortest route to the York West (A1036) junction. This is Tadcaster Road.
2. Proceed STRAIGHT ON along this road, through several sets of traffic lights, past York Race-course which will be on your right, until you reach the city walls in front of you. This is Micklegate Bar.
3. At these traffic lights, turn RIGHT, into Nunnery Lane. The city wall will then be to your left.
4. Proceed along this road, bearing left into Price's Lane, and left again into Bishopgate Street. This is part of the Inner Ring road.
5. BEFORE the river bridge, just as the city wall ends, turn LEFT into Skeldergate, and immediately LEFT again into Cromwell Road. The vehicle entrance to the hotel is 100 metres on the right, at the brow of the hill.
6. Parking is available in the top level, or the lower level of the car park.
7. In the unlikely event you are unable to find a space or you require disabled parking space, please contact reception for further information.